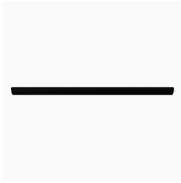





Erie County Land Bank - VE Pricing_Revised 1.5.23

Line #	Mfg	Part Number	Part Description	Qty	Sell	Ext Sell
1	KNO	AWM1S48	Stiffener for Worksurface 32W, for 48"or 54"application	2	\$44.87	\$89.74
						
2	KNO	AWM1S60	Stiffener for Worksurface 44W, for 60" application	2	\$45.68	\$91.36
						
3	KNO	D1D6630N	Worksurface, "D" Peninsula, 66Wx30D	1	\$463.37	\$463.37
						
		(CORE) 139	Core Laminates LAM: Light Ash			
		(CORE) 139	Core Edgebands EDGE: Light Ash			
4	KNO	D1R10824N	Worksurface, Rectangular, 108Wx24D, no grommet	1	\$419.72	\$419.72
						
		(CORE) 139	Core Laminates LAM: Light Ash			
		(CORE) 139	Core Edgebands EDGE: Light Ash			

Quote Name:

EC-1122-Erie Cnty Land Bank Office VE Rev 1.5.sp4

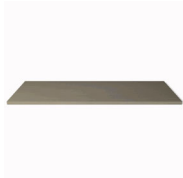
Erie County Land Bank - VE Pricing_Revised 1.5.23

Line #	Mfg	Part Number	Part Description	Qty	Sell	Ext Sell
5	KNO	D1R6024N	Worksurface, Rectangular, 60Wx24D, no grommet	1	\$232.91	\$232.91



(CORE)
139
(CORE)
139
Core Laminates
LAM: Light Ash
Core Edgebands
EDGE: Light Ash

6	KNO	D1R6624N	Worksurface, Rectangular, 66Wx24D, no grommet	1	\$251.26	\$251.26
---	-----	----------	---	---	----------	----------



(CORE)
139
(CORE)
139
Core Laminates
LAM: Light Ash
Core Edgebands
EDGE: Light Ash

7	KNO	D1R9024N	Worksurface, Rectangular, 90Wx24D, no grommet	1	\$334.88	\$334.88
---	-----	----------	---	---	----------	----------



(CORE)
139
(CORE)
139
Core Laminates
LAM: Light Ash
Core Edgebands
EDGE: Light Ash

Erie County Land Bank - VE Pricing_Revised 1.5.23

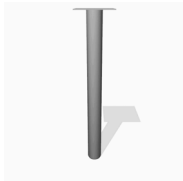
Line #	Mfg	Part Number	Part Description	Qty	Sell	Ext Sell
8	KNO	DB1F24SP	Flat Bracket 24" - Single Pack	2	\$17.95	\$35.90



9	KNO	DB1F30SP	Flat Bracket 30" - Single Pack	1	\$19.99	\$19.99
---	-----	----------	--------------------------------	---	---------	---------



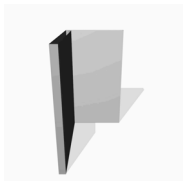
10	KNO	DBSCR	Adjustable Support Column, 2-1/2Dia	1	\$163.57	\$163.57
----	-----	-------	-------------------------------------	---	----------	----------



(CORE)
118T

Core Paints
PAINT: Bright White (Textured)

11	KNO	DD1EU24	End Unit Support, 14-7/8Wx24D	5	\$248.00	\$1,240.00
----	-----	---------	-------------------------------	---	----------	------------



(CORE S)
118

Smooth Core Paints
PAINT: Bright White

Erie County Land Bank - VE Pricing_ Revised 1.5.23

Line #	Mfg	Part Number	Part Description	Qty	Sell	Ext Sell
12	KNO	DS2PM72L	Overhead Cabinet, Series 2 steel or veneer front, 71-7/8W, Panel Mounted, with lock	2	\$597.57	\$1,195.14



(CORE) *Core Paints*
118T *CASE: Bright White (textured)*
~ *same paint on case and front*
(KEYALIKE) *LOCK: Keyed Alike*
(LOCK2) *Specify 2 lock cores & keys separately*

13	KNO	DS4DW30L	Doublewide Pedestal, Series 2 steel front, File/File, 30Wx18-3/4D, with lock, Recessed Pull	1	\$613.88	\$613.88
----	-----	----------	---	---	----------	----------



(CORE) *Core Paints*
118 *PAINT: Bright White (smooth)*
(KEYALIKE) *LOCK: Keyed Alike*
(LOCK) *Specify lock core & key separately*

14	KNO	DS4PFL24AB	Dividends Series 2 Floorstanding Pedestal, 15Wx24D, Box/Box/File, with Back, Recessed Pull, with lock	2	\$416.46	\$832.92
----	-----	------------	---	---	----------	----------



~ *Standard box drawer sides*
(CORE) *Core Paints*
118 *PAINT: Bright White (smooth)*
(KEYALIKE) *LOCK: Keyed Alike*
(LOCK) *Specify lock core & key separately*

A.J. Grack Business Interiors

3364 West 26th Street | Erie, PA 16506
P 814.835.8217 | F 814.836.0307

Prepared by:
Amy Monacella
P 814-835-8217
amy@ajgrack.com

Quote Name:

EC-1122-Erie Cnty Land Bank Office VE Rev 1.5.sp4

Prepared for:
Christie Mahany
P 814-451-7339
christie@eriecountylandbank.org

1/5/2023

Erie County Land Bank - VE Pricing_Revised 1.5.23

Line #	Mfg	Part Number	Part Description	Qty	Sell	Ext Sell
15	KNO	F-36-20	Universal Fabric Board, 36Wx20H	4	\$329.00	\$1,316.00



S1 *OPT: Squared Corner/Rectilinear Edge*
A *OPT: 1/2" Mineral Board*
10 *OPT: Fabric Group (F10)*
(W432) *FABRIC: Versatility*
W4329 *COL: Sky*
FWMF3620 *OPT: Flush Wall-Mounted*

SUBTOTAL: \$7,300.64
Sales tax not included.

GRAND TOTAL: \$7,300.64
Sales tax not included.